

Water Application Solutions



GRUNDFOS



HAYWARD



ATi
Analytical Technology



Accu-Tab
SYSTEM



MILLER-LEAMAN
INCORPORATED



Yamada[®] america, inc.
Manufacturer of Air Operated Double Diaphragm Pumps



HACH



PLAST-O-MATIC
VALVES, INC.



Blue-White[®]
Industries, Ltd.



SPEARS



Honeywell



ASCO[®]



WALCHEM
IWAKI America Inc.



SES
Food Safety Specialists

Southeastern Systems, Inc.

Phone: 770-922-5828

Fax: 770-922-5587

Email: nancy@sesystemsinc.com

www.sespumps.com

Southeastern Systems, Inc.

P.O. Box 705
Conyers, GA 30012
770-922-5828
770-922-5587 Fax

Southeastern Systems has been serving the Food and Municipal Water Industry for more than 25 years. Whether it's a pump you need, an electronic monitor, valve or a specialty PVC item, our knowledgeable staff can assist you in finding the right component for your water treatment application. The products we offer are the highest quality, designed to be easily installed, maintained and offered at competitive pricing.

Our offices are open Monday - Friday 8:00 am to 5:00 pm EST.

Contact us:

Phone - **770-922-5828**

Fax - **770-922-5587**

Email nancy@sesystemsinc.com or visit us on our

Website: www.sespumps.com

We will never knowingly disappoint you. If for any reason our products and services do not meet or exceed your expectations, please call us at **770-922-5828**. We would also appreciate hearing your ideas and suggestions as well. You are important to us.



SES

Food Safety Specialists

P.O. Box 705 Conyers GA 30012

Tel 770.922.5828

Fax 770.922.5587

www.sespumps.com

Your Go-To Southeastern Systems Reference Guide



Nancy Garner
nancy@sesystemsinc.com

RELY ON OUR First-class supply chain to help your business succeed

SAME DAY SHIPPING ON MOST OF OUR IN-STOCK PUMPS AND PARTS
within the continental U.S. when you order is received by 11 AM EST time at our facility

VALUABLE CUSTOMIZED SERVICES & SOLUTIONS

From technical support to inventory solutions, we're here to help keep your facility running safely and smoothly



Alan Akin
alan@sesystemsinc.com

24/7 CUSTOMER SERVICE

Our customer service team will help you quickly find and place your order so you get on with your day



Grundfos Pumps, Parts, Repair Kits

VERTICAL MULTISTAGE CENTRIFUGAL PUMPS

CRI's , CRN's, CR's IN WIDE RANGE OF SIZES

Designed to cover a wide variety of applications, ranging from small domestic applications to large industrial systems.

Grundfos pumps are the Industry Standard where performance and material standards must meet specific demands. SES can assist in sizing the appropriate pump for your application. Our prices are universally competitive.

Typical Applications: Washing & Cleaning, Water Treatment, Temperature control, Pressure Boosting, Waste Water and Irrigation.

THE CM/CME ABBREVIATION DERIVES FROM THE MOST BASIC DESCRIPTION OF THE PUMP:

Centrifugal Modular

The pump is composed of a series of interchangeable modules, all of which have been designed to work together seamlessly, whatever the application.

The CM/CME pump is primarily used as a built-in pump in OEM solutions. The compactness and flexibility make it an optimal solution for installation and interaction with other components in a larger product. It can also be used as a system pump, connected in complete system solutions or even as a stand-alone pump.

Wide Temperature range

Thanks to the numerous configuration possibilities and range of materials, the Grundfos CM/CME pump can operate over a wide range of temperatures: from -30°C to 120°C . If you require different pumps for different applications, this flexibility and streamlining helps keep maintenance and spare parts costs to a minimum.



CM 1-3-G



CM 5-2-1



CM 3-8-A



CM 5-4-1



CM 10-8-G



CM 3-2-A



CM 3-3-1

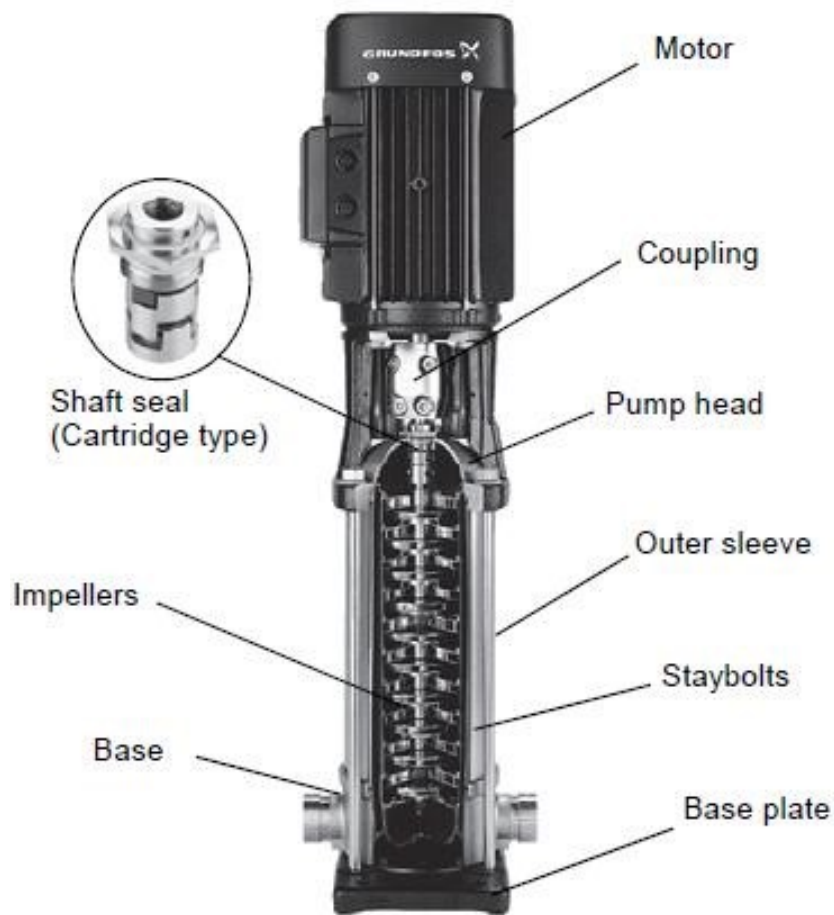


CM 5-8-A



CM 3-2-A

PUMPS



Grundfos Spare Parts and Service Kits for all Pumps:

Grundfos spare parts and service kits are original high quality Grundfos components. You can be confident that throughout the entire life cycle of your pumps you can count on us to deliver precision and reliability.

Service Kits contain original spare parts such as O-Rings and shaft seals for particular Grundfos products. They are the fast and easy way to purchase and stock most necessary spare parts for standard Grundfos pumps, saving you a lot of time and effort in your maintenances.

Call for specific quotes.



Stack Kits



O-Rings



Seal Kits

METERING PUMPS



Grundfos SMART Digital dosing pump range, available since 2010, is recognized for its state of the art monitoring features that ensure dependable, safe, and economical dosing operations, and for its industry-leading accuracy.

SMART Digital S

- Max flow 8gph: max pressure 232 psi, max turn down ratio 3000:1

SMART Digital XL

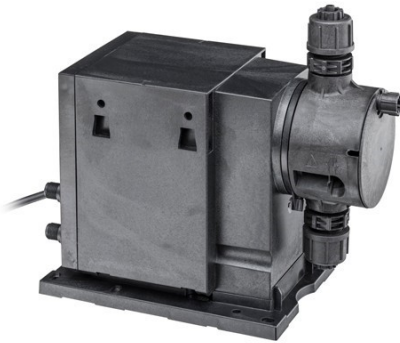
- Max flow 52.8 gph: max pressure 145 psi, max turn down ratio 800:1

Accurate dosing of chemicals is a crucial part of production processes in many different businesses. From drinking water and wastewater treatment to industrial processing in the pharmaceutical, chemical, and food & beverage industries, dosing exactly the right amount of chemicals is important in order to reach process targets, and in order to lower operation costs while ensuring process safety and reliability.

Intelligent dosing pumps with high technology drive and adjustment mechanisms represent the ideal solution for increasingly complex dosing. They make life easier for users by keeping processes running precisely, reliably and cost-effectively.



METERING PUMPS



- The high turn-down ratio significantly reduces the number of different models required.
 - All models have a universal mounting plate for all widespread mounting methods. The pump can quickly and easily be removed from the mounting plate.
 - The control cube can be mounted facing left, right, or straight ahead. Maximum flexibility is further ensured by a wide range of adjustment options and supply voltages (100-240 V, 50/60 Hz), and a hydraulic connection kit.
- Optional E-box and CIU boxes enable SMART Digital pumps to be integrated – and even retrofitted – in common standard fieldbus networks.



DDI

- Flows from 0.10 to 39.6 gph
- Maximum pressure of 232 psi
- Viscosities up to 3,000 cps
- Turndown ratio up to 800:1

Mechanical and Digital dosing pumps

Applications

Dosing & Disinfection

Pump designs:

Diaphragm pumps

Technical data:

Head max: 232.5 psi

Liquid Temperature : 14...194°F

Max flow: 248.3 US gal/hour

P max: 232.06 psi



METERING PUMPS

Walchem Metering Pump



The **EK Series** pump is the world's first and only IP67 rated electronic metering pump guaranteed to operate submerged 3 feet under water for up to 30 minutes! This makes the EK Series pumps ideal for wet or high humidity environments found in irrigation, agriculture, food & beverage, car wash or paper mill applications.

EKC36R1-VC 6.7 GPH @ 30 PSI

The **EHE Series** is the workhorse of the E-Class metering pumps. EHE Series pumps have outputs up to 20GHP and pressure capabilities to 150 PSI. Combining the EHE performance with a turndown ratio of 1800:1 yields one of the most versatile pumps in the treatment industry today.

EHE36E1-VEV 8.5 GPH @ 105 PSI



Manual Air Vent Valve PVC EPDM
E90590



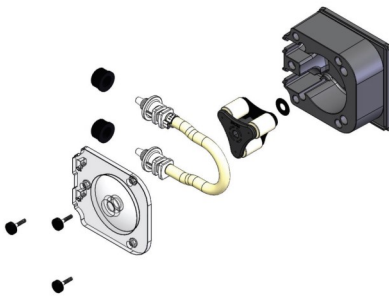
Walchem Metering Pump Repair Kit
Part#X11VC-PK

METERING PUMPS

Blue-White Flexflo Peristaltic Metering Pumps

KEY FEATURES

- Peristaltic pump design does not have valves that can clog requiring maintenance.
- Self priming even against maximum line pressure
- Outputs to 5.17 GPH (19.56 LPH)
- Output pressures to 100 psi
- Output volume is not effected by changes in back pressure.
- Patented pump tube design installs easily and stays centered on the rollers without manual adjustments.
- Two pump tubes supplied with each pump. No extra tubing required.
- Easy to use dial knob speed adjustment.
- Built-in Tube Failure Detection system. Senses chemical in the pump head, shuts off the pump and activates an NPN open collector output.
- Compatible with Blue-White's output flow verification sensor systems.
- Durable housing of chemical resistant Valox thermoplastic.



Spacer, back Part#90011-014

Roller Assembly complete (rotor) Part#71000-350

Tube Assembly, 3/8" OD tube compression

Part# A1-2T, A1-3T, A1-6T, A1-7T, A1-8T

Pump Head cover, polycarbonate Part#71000-156

Thumb Screw with key drive Part#90011-160

Tube nut, compression for 3/8" tubing Part#C-330-6



Blue-White Parts A1-7T Pump Tube
assembly for A-100N

FlexFlo A1F Peristaltic Metering Pump

The Flexflow A1F peristaltic metering pump is designed for metering off-gassing chemicals, such as sodium hypochlorite and peracetic acid. The pump offers a smooth chemical feed without risk that it will overheat or lose its prime. Furthermore, the pumps do not require continuous maintenance and does not include any check valves that could potentially clog. A large turndown ratio (1,000:1) allows users to standardize on one pump for all chemical-feed applications. Feed rates up to 5.6 gal/h (21.19 L/h) and pressures up to 100 psi (6.89 bars) are achievable. Other features include a sealed weatherproof enclosure, a patented tube-failure-detection functionality, mounting brackets and a self-adjusting power supply.



Flex-Pro A3 Peristaltic Pump

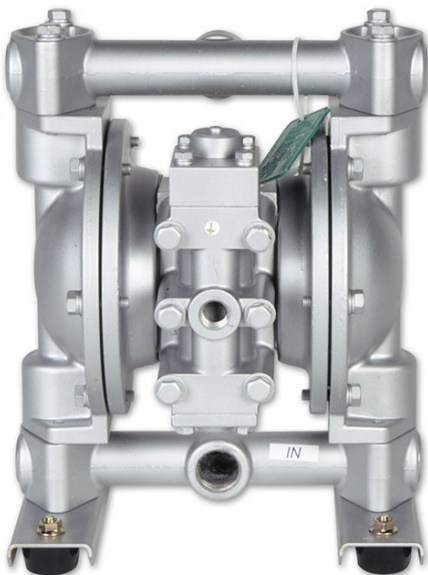


- Max feed rate
33.3 GPH / 2100.9 ML/Min
- Max pressure
125 PSI / 8.6 bar
- Variable speed brushless DC motor
- Washdown, NEMA 4X (IP66)
- Patented Tube Failure Detection
- Accuracy: +/-0.5%
- Repeatability: +/-0.5%
- Output adjustment: 1-100% in 0.1% increments

Yamada Air-Powered Double Diaphragm Pumps



Yamada's reputation for manufacturing top quality products, allied with continuing efforts in research and development, have created a strong foundation for market leadership. As an ISO 9001 certified corporation, stringent quality procedures are followed throughout the manufacturing process, including assembly procedures and product testing.



*Our slogan, **The Proof's in the Pump** underscores our solid reputation for innovation and reliability. This reputation is truly built into every Yamada pump.*

Walchem W600 pH Monitor

NEW PRODUCTS



Reliable, Flexible, Powerful

The W600 series provides reliable, flexible and powerful control for your water treatment program.

- Controls up to 6 complex functions
- Touch screen display with icon-based programming makes setup easy
- Analytical sensors measuring pH, ORP, conductivity, disinfection, fluorescence and flow meter input





Q 46H Residual Chlorine Monitor

Provides easy online monitoring and control of Chlorination System. Monitors Free Chlorine levels from 0-200 ppm. The constant head flow cell ensures that a constant flow of water passes across the face of the sensor, helping provide reliable and accurate measurement readings.

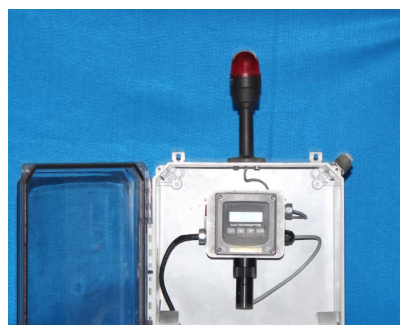


ATI Air Monitor With Alarms

With changing OSHA air standards for work production areas, monitoring production air quality is more important than ever. The wall mounted unit includes Alarm and Lights that can be programed to flash. Our ATI F12 Toxic Gas Detector is designed to measure toxic gases and oxygen in hazardous locations.

ATI Air Monitor Remote Sensor Assembly

The remote sensor option permits the sensor to be mounted up to 100' from the transmitter. Remote interconnect cable sold separately.



Nema 4 Enclosure and Alarm Light

Provides safe environment for damp area.

Parts for Q46 Monitor

The basic sensing element used in the total chlorine monitor is a 3-electrode amperometric membrane sensor which measures chlorine directly. The chlorine measurement does not alter the sample or add any chemicals to the sample stream, so the water flow can return to the system if desired.



CL2 Probe Sensor

#00-0066



Free Chlorine Electrolyte 4oz.

#09-0011

Free CL2 Membranes 10pk

#05-0005

CL2 Flow Sensor Screw & O-Ring Kit

#05-0004



Flow Cell Assemble

#00-0043

Sensor Cable

#03-0029

O-Ring for Flow Cell

#42-0014

HACH pH MONITOR & PARTS

The SC200 Universal Controller is the most versatile controller on the market. It allows the use of digital and analog sensors, either alone or in combination, to provide compatibility with the broadest range of sensors. Providing accurate pH readings, even in high Alkalinity water profiles.



LXV404.99.00502

SC200 Universal Controller 100-240 AC with one Digital Sensor input and two 4-20 MA outputs.

CPVC Union Mount for Hach pH Sensor includes standard 1 1/2 inch tee, special union pipe with adaptor, Sealing hub, and locking ring in CPVC, and Viton O-ring.
Part #6131300



DPD1P1—pH Sensor

The smart choice for accurate and reliable online process pH measurement. Exceptional process pH sensor performance with differential Electrode pH measurement technique. Low maintenance and reliability with the double junction salt bridge and built-in encapsulated preamp.

pH Buffer Solutions—Myron Buffers



Traceable to NIST certified pH references and color-coded for instant identification. These 4, 7 and 10 pH Buffer Solutions are mold inhibited and accurate to within +0.01 pH units @ 25 C. Sold in 32 oz. bottles.

Myron pH Calibrating Buffer Solution pH 4.00 #PH04

Myron pH Calibrating Buffer Solution pH 7.00 #PH07

Myron pH Calibrating Buffer Solution pH 10 #pH10

Walchem Injection Valve

Walchem E-Class Metering pump, injection check Valve for PE liquid and GERPP Body, EPDM seat, 1/2" NPT threaded connection standard.

INJECTION VALVE

#E90006



Plastic Hose Tubing

3/8" ID X 1/2" OD, Natural, 100 ft. roll.

Part #E00001-100

Walchem Tri-Purpose Valve

Walchem's economical Tri-Purpose Valves are three valves in one. Installed in one direction, the spring-loaded PTFE faced diaphragm provides 30 psi of back pressure and anti-syphon protection. Installed in the opposite direction, it provides pressure relief that is adjustable from 30 - 125 psi.

Part #8011C



Pressure Relief Valve



Pressure Release Valve—These Plast-o-matic valves relieve excess/dangerous pressure from closed-top vessels or piping systems. A self contained mechanized device that requires no accessory items for their operation. Offered in PVC for durability and corrosion resistance.

| | |
|------------|--------------|
| 1/2 inch | Part #RVT050 |
| 3/4 inch | Part #RVT075 |
| 1 inch | Part #RVT100 |
| 1 1/2 inch | Part #RVT150 |
| 2 inch | Part #RVT200 |

Hayward EATB Series Electric Actuated Ball Valve



EATB Series is a package unit of an EA actuator and a TB series ball valve. The EA actuator is a 115 VAR full featured electric actuator with a TB Series PVC Ball Valve and EPDM O-rings. Socket and threaded end connections come with the valve. Sizes from 1/2 inch to 2 inches.

Part #

EATB1100STE 1" PVC Actuated Ball Valve

EATB1150STE 1 1/2" PVC Actuated Ball Valve

EATB2200STE 2" PVC Actuated Ball Valve

Insta-Chlor

Hand Held Sanitation Unit

Fast, Easy and Safe Sanitation for Hard Surfaces

ACCU-TAB CHLORINATORS



It's here, the only smart hand held hard surface sanitizer where the user can dial-in the chlorine level that they desire for cleaning, sanitizing or disinfecting.

Insta-Chlor is built for the job— it is heavy duty, using schedule 80 PVC that is ready for industrial use, but with a sleek ergonomic design for easy handling. It is powered by normal water pressure and delivers a range of applications from gentle sprays to jet streams of up to 40 feet. Insta-Chlor uses solid chlorine tablets, which provides erosion at predictable rates with highly accurate chlorine levels, eliminates premature dissolving, and eliminates the safety issues associated with liquid chlorine.

Asco Solenoid Valve Series 221 Slow Closing



Pilot operated, normally open or normally closed. Snubber slows disc closing speed to protect system against water hammer damage more effectively than other techniques. Pressure spike due to water hammer is reduced to a point, eliminating the need for suppressors or other controls in most water systems.



SOLENOID VALVES

Asco NPT, 120 Volt, normally closed, brass body solenoid valve for water service with a maximum temperature of 180 F and a maximum pressure of 150 psi.

| | |
|--------|-----------------|
| 2" | 8210G100 |
| 1 1/2" | 8210G022 |
| 1 1/4" | 8210G008 |
| 1" | 8210G004 |
| 3/4" | 8210G009 |
| 1/2" | 8210G015 |



Micro—Flo Sensor

An empty chemical tank, clogged injection filter, lost prime, and other problems can prevent a metering pump from actually injecting chemical. This innovative product is designed to be used with your metering pump to provide accurate flow measurement and Accumulated Flow Data. It displays how much chemical your metering pump is dispensing.



PCD/PCS Series Actuators

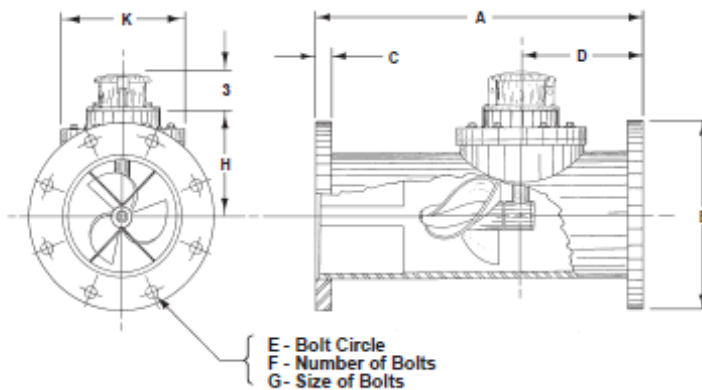
KEY FEATURES

- For All Sizes of Ball and Butterfly Valves
- Four-Piston Rack and Pinion Design
- Compact, Lightweight Design
- Position Indicator
- Nema-Four Style Solenoid Mounting
- Adjustable Travel Stops

Sizes 1/2" - 2" on the preassembled ones, up to 6" on the Actuated.

Model ML03

150 psi Flanged Tube Meter
Sealed Meter Mechanism—Magnetic Drive
Sealed Totalizer
Sizes 2" thru 48"



Model ML03 Flanged Tube Meters are manufactured to the highest standards. Materials used on all meters and flow ranges for the low velocity meter meet or exceed AWWA standard C704-02. The flanged end tube design permits use in a wide range of applications with up to 150 psi working pressure.

Plast-O-Matic PAA Solenoid Valve

Solenoid Valve



Series PS Pilot operated Solenoid Valve
Inlet rating 140 psi, back pressure rating to 70 PSI, with
minimum 5 PSI differential required.

Features:

- Normally closed, in-line design with bubble-tight shut-off.
- Minimum 5 PSI differential required.
- High pressure: Particularly for applications where hogback-pressures (up to 70 PSI) are required e.g. controlling flow spray nozzles, high pressure chemical injections. (Inlet pressure to 140 PSI)
- High flow rates—Cv's from 5.2 on the 1/2" size to 80 on the 3" size.
- Tested to over 1,000,000 cycles in laboratory conditions, with water.
- Versatility: Can be used with all types of solutions including acids, caustics, solvents and chlorine solutions.
- Rugged thermoplastic construction is resistant to both internal and atmospheric corrosion. No metal parts in wetted areas.
- Sizes: 1/2", 3/4", 1", 1 1/2", 2 and 3".

SES TANK LEVEL SWITCH MODEL #MA958



SES Manufactured Tank Level Control Box unit is economical and makes adjusting tank water levels easy. Includes a timer adjustment switch for precise tank level control. Can be used on a wide variety of applications.

Float KA Mini Sensor to be used with our SES tank level switch. This self-contained mini float sensor has a float sealed power connector cable.

SES can engineer a dual float level switch for your applications.

Hach Titration Kits

Hach drop count titration kits are a simple, easy and cost effective way to test for many common parameters, including chlorine, pH, Alkalinity, Hardness, Ammonia and more. Kits can be used in the field or lab for a quick reference, or simple yes / no confirmatory testing.



| | |
|--------------------------------------|-------------------|
| Chlorine, Free | CAT. NO. 2231-02 |
| Chlorine, Total (1 Drop = 1PPM) | CAT. NO. 2254-01 |
| Chlorine, Total (1 Drop = 10 PPM) | CAT. NO. 24444-00 |
| Wide Range Indicator pH (range 4-10) | CAT. NO. 1470-11 |
| Alkalinity | CAT. NO. 24443-01 |
| Hardness, Total | CAT. NO. 1454-01 |
| Ammonia | CAT. NO. 2241-00 |

Honey Well Chart Recorder

The DR 4300 10 inch Chart Recorder has bright digital displays with 2 channels. This configurable chart recorder adapts to a wide range of applications. Features universal inputs and built-in self test. The molded housing has a gasket door and acrylic window to meet NEMA 3 requirements; panel on surface mount.



Single Pen Model with Alarms

#DR4311-20E0-H0100-0000-0000-00-000-E0

Without Alarms

#DR4311-0000-H0100-0000-0000-00-000-E0

Two Pen Model With Alarms

#DR4312-22EE-H0100-0000-0000-00-000-E0

Without Alarms

#DR4312-0000-H0100-0000-0000-00-000-E0

CHART RECORDER PAPER

0-100 Chart

#24001660-001

0-14 Chart

#24001660-036

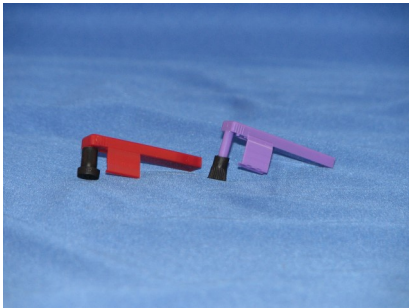


Chart Recorder Pen

Red Chart Recorder Pens

#30735489-002

Purple Chart Recorder Pens

#30735489-007

DIGITAL FLOW METERS

FLOW METERS



Models with Polypropylene

Pipe Fitting Material

GPM MODELS

| Pipe Size F/NPT | GPM Flow Range | RATE ONLY Model Number | TOTAL ONLY Model Number | RATE & TOTAL Model Number |
|-----------------|----------------|------------------------|-------------------------|---------------------------|
| 3/8" | .8 to 8 | RB-375PI-GPM1 | TB-375PI-GPM1 | RT-375PI-GPM1 |
| 3/8" | .4 to 4 | RB-375PI-GPM2 | TB-375PI-GPM2 | RT-375PI-GPM2 |
| 1/2" | 2 to 20 | RB-500PI-GPM1 | TB-500PI-GPM1 | RT-500PI-GPM1 |
| 1/2" | .5 to 5 | RB-500PI-GPM2 | TB-500PI-GPM2 | RT-500PI-GPM2 |
| 3/4" | 4 to 40 | RB-750PI-GPM1 | TB-750PI-GPM1 | RT-750PI-GPM1 |
| 3/4" | .8 to 8 | RB-750PI-GPM2 | TB-750PI-GPM2 | RT-750PI-GPM2 |
| 1" | 6 to 60 | RB-100PI-GPM1 | TB-100PI-GPM1 | RT-100PI-GPM1 |
| 1" | 2 to 20 | RB-100PI-GPM2 | TB-100PI-GPM2 | RT-100PI-GPM2 |
| 1-1/2" | 15 to 150 | RB-150PI-GPM1 | TB-150PI-GPM1 | RT-150PI-GPM1 |
| 1-1/2" | 10 to 100 | RB-150PI-GPM2 | TB-150PI-GPM2 | RT-150PI-GPM2 |
| 1-1/2" | 6 to 60 | RB-150PI-GPM3 | TB-150PI-GPM3 | RT-150PI-GPM3 |
| 1-1/2" | 2 to 20 | RB-150PI-GPM4 | TB-150PI-GPM4 | RT-150PI-GPM4 |
| 1-1/2" | 1 to 10 | RB-150PI-GPM5 | TB-150PI-GPM5 | RT-150PI-GPM5 |
| 2" | 30 to 300 | RB-200PI-GPM1 | TB-200PI-GPM1 | RT-200PI-GPM1 |
| 2" | 15 to 150 | RB-200PI-GPM2 | TB-200PI-GPM2 | RT-200PI-GPM2 |
| 2" | 10 to 100 | RB-200PI-GPM3 | TB-200PI-GPM3 | RT-200PI-GPM3 |
| 2" | 6 to 60 | RB-200PI-GPM4 | TB-200PI-GPM4 | RT-200PI-GPM4 |
| 2" | 4 to 40 | RB-200PI-GPM5 | TB-200PI-GPM5 | RT-200PI-GPM5 |
| 2" | 2 to 20 | RB-200PI-GPM6 | TB-200PI-GPM6 | RT-200PI-GPM6 |

Digital Flow Meters are used on a variety of applications. They display total or both. Can be mounted vertically or horizontally. AA batteries included.

F-1000 Series—Digital Paddlewheel Flow Meter Socket Weld PVC Tee

| Pipe Size | RATE ONLY Model Number | TOTAL ONLY Model Number | RATE & TOTAL Model Number |
|-----------|------------------------|-------------------------|---------------------------|
| 1" | RB-100AT-GPM1 | TB-100AT-GPM1 | RT-100AT-GPM1 |
| 1 1/2" | RB-150AT-GPM1 | TB-150AT-GPM1 | RT-150AT-GPM1 |



Rod Guided Flow Meters

Rod Guided Flow meters for simple visual flow conformation. This rod guided flow meter is perfect for a variety of applications. The polysulfone meter body resist high temperatures and pressures. Adaptors and unions engineered for increased protection from misalignments and vibrations.



| Pipe Size | Dual Scale Range | | Float Material | Model Number |
|-----------|------------------|-----------|----------------|----------------|
| | GPM | LPM | | |
| 1" | .5 to 6 | 2 to 22 | Teflon | F-451006LHN |
| 1 1/2" | .5 to 6 | 2 to 22 | Teflon | F-451006LHN-24 |
| 1" | 1.0 to 10 | 4 to 40 | 316 SS | F-451001LHN |
| 1 1/2" | 1.0 to 10 | 4 to 40 | 316 SS | F-451001LHN-24 |
| 1" | 2.0 to 20 | 7.5 to 75 | 316 SS | F-451002LHN |
| 1 1/2" | 2.0 to 20 | 7.5 to 75 | 316 SS | F-451002LHN-24 |
| 1" | 3.0 to 30 | 12 to 115 | 316 SS | F-451003LHN |
| 1 1/2" | 3.0 to 30 | 12 to 115 | 316 SS | F-451003LHN-24 |
| 1" | 4.0 TO 40 | 15 to 155 | 316 SS | F-451004LHN |
| 1 1/2" | 4.0 to 40 | 15 to 155 | 316 SS | F-451004LHN-24 |

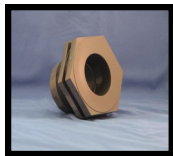
2" Pipe Size

| MODEL NUMBER | Dual Scale Range | | Float Material | Guide Rod Material |
|--------------|------------------|------------|----------------|--------------------|
| | GPM | LPM | | |
| F-452020LHN | 2 to 20 | 8 to 78 | Teflon | 316 SS |
| F-452060LHN | 6 to 60 | 30 to 230 | 316 SS | 316 SS |
| F-452080LHN | 8 to 80 | 40 to 300 | 316 SS | 316 SS |
| F-452100LHN | 6 to 100 | 20 to 380 | 316 SS | 316 SS |
| F-452130LHN | 20 to 130 | 80 to 500 | 316 SS | 316 SS |
| F-452175LHN | 25 to 175 | 100 to 675 | 316 SS | 316 SS |



F-44750L-12 0-10 Flow Meter
.75" M/NPT INLINE

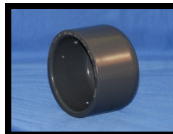
SIZE 1/2" 3/4" 1" 1 1/4" 1 1/2" 2" 3" 4" 6"



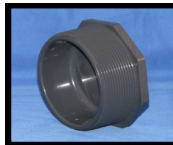
Tank Bulkhead
BF10???



Female Adapter
S x T



CAP
SCO



PLUG
MIPT

| | | | | | | | | |
|---------|---------|---------|---------|---------|---------|---------|---------|---------|
| 050 | 075 | 100 | 125 | 150 | 200 | 300 | 400 | 600 |
| 835-005 | 835-007 | 835-010 | 835-012 | 835-015 | 835-020 | 835-030 | 835-040 | 835-060 |
| 847-005 | 847-007 | 847-010 | 847-012 | 847-015 | 847-020 | 847-030 | 847-040 | 847-060 |
| 850-005 | 850-007 | 850-010 | 850-012 | 850-015 | 850-020 | 850-030 | 850-040 | 850-060 |

Tank Bulkhead

Hayward's BFA Series industrial bulkhead fittings (tank adaptors) easily permit safe, quick pipe connections to be made to plastic, metal or plastic tanks. Rated up to 150 psi at 70 °F.

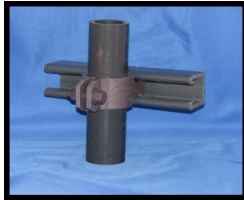


Plast-o-Matic Gauge Guard

Made with Natural Polypropylene, this diaphragm seal has a 1 1/2" stainless steel case. This new design uses stainless steel hex insert (Non-Wetted) to prevent overtightening. The compact size makes these isolators ideal for limited space installations. For use with highly aggressive or ultra-pure liquids 0-160 psi.

PVC Channel & Straps—Comprised of all non metallic, corrosion resistant materials and maintenance free properties. These channels and straps are high strength and light weight. They are easy to handle and install.

PVC PIPE CLAMPS 1/2" to 8" and PVC CHANNEL



| PCR-050 | PCR-075 | PCR-100 | PCR-125 | PCR-150 | PCR-200 | PCR-300 |
|---------|---------|---------|---------|---------|---------|---------|
| 1/2" | 3/4" | 1" | 1 1/4" | 1 1/2" | 2" | 3" |

VAN STONE FLANGE SOCKET & GASKET KIT



Van Stone Flange, Socket & Gasket Kit—These ansi flanges, Van Stone kits utilize two pieces with center socket loose from the flange portion until tightened. Maximum 150 psi. Gasket and bolts are included

SIZE 1/2" 3/4" 1" 1 1/4" 1 1/2" 2" 3" 4" 6"



Comp Ball
Valve S x S
CPXF-01???



True Union
Ball Valve
S x S
TB1???



True Union
Ball Check
Valve S x S
TC10???



Gate Valve
S x S
2012-???

| SIZE | 1/2" | 3/4" | 1" | 1 1/4" | 1 1/2" | 2" | 3" | 4" | 6" |
|------|------|------|-----|--------|--------|-----|-----|-----|----|
| 050 | 075 | 100 | 125 | 150 | 200 | 300 | 400 | 600 | |
| 050 | 075 | 100 | 125 | 150 | 200 | 300 | 400 | 600 | |
| 050 | 075 | 100 | 125 | 150 | 200 | 300 | 400 | 600 | |
| 050 | 075 | 100 | 125 | 150 | 200 | 300 | 400 | 600 | |

SIZE 1/2" 3/4" 1" 1 1/4" 1 1/2" 2" 3" 4" 6"

| | | | | | | | | | | |
|---|---|---------|---------|---------|---------|---------|---------|---------|---------|---------|
|  | 45° S x S | 817-005 | 817-007 | 817-010 | 817-014 | 817-015 | 817-020 | 817-030 | 817-040 | 817-060 |
|  | 90° S x S | 806-005 | 806-007 | 806-010 | 806-012 | 806-015 | 806-020 | 806-030 | 806-040 | 806-060 |
|  | Couplin S x S | 829-005 | 829-007 | 829-010 | 829-012 | 829-015 | 829-020 | 829-030 | 829-040 | 829-060 |
|  | Tee S x S x S | 801-005 | 801-007 | 801-010 | 801-012 | 801-015 | 801-020 | 801-030 | 801-040 | 801-060 |
|  | Union S x S | 897-005 | 897-007 | 897-010 | 897-012 | 897-015 | 897-020 | 897-030 | 897-040 | 897-060 |
|  | Male Adapter S x S | 836-005 | 836-007 | 836-010 | 836-012 | 836-015 | 836-020 | 836-030 | 836-040 | 836-060 |
|  | Comp Ball Valve S x S CPXF- 01??GS | 050 | 075 | 100 | 125 | 150 | 200 | 300 | 400 | 600 |
|  | True Un- ion Ball Valve S x S | 050 | 075 | 100 | 125 | 150 | 200 | 300 | 400 | 600 |
|  | True Un- ion Ball Check Valve S x S | 050 | 075 | 100 | 125 | 150 | 200 | 300 | 400 | 600 |
|  | Gate Valve S x S 2012-??? | 050 | 075 | 100 | 125 | 150 | 200 | 300 | 400 | 600 |

Accu-Tabs Chlorinators

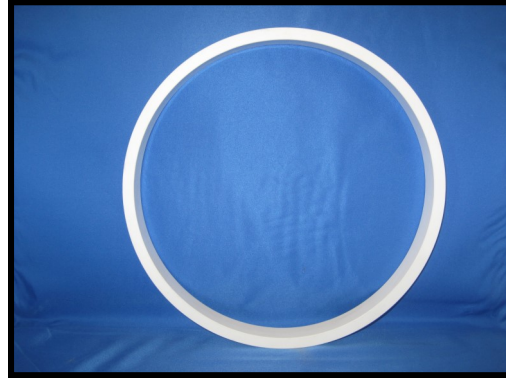
The complete NSF certified Accu-Tab System combines specially engineered chlorine feeders with quality controlled three inch Cal-Hypo tablets. Accu-Tab Chlorinators are solidly built. Each durable corrosion resistant chlorinator is hand crafted in the US using high quality PVC and is backed by a limited warranty.



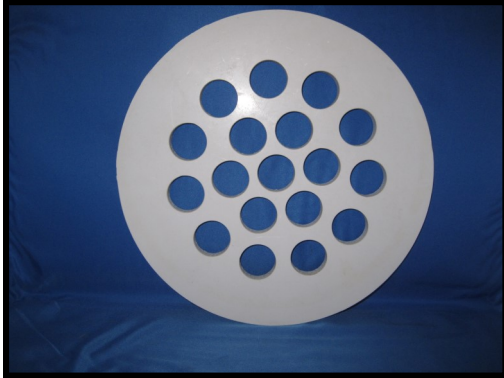
SES Millernator



| Model Number | Delivered per hour |
|--------------|---------------------|
| 3012 | Up to .2 lbs / hour |
| 3075 | .2 to .7 lbs / hour |
| 3150 | 7 to 2 lbs / hour |
| 3530 | 2 to 4 lbs / hour |
| 30600 | 4 to 8 lbs / hour |
| 361000 | 8 to 13 lbs / hour |



1" RING



SIEVE PLATE



LID FOR CHLORINATORS

Delivered on-site Chemicals

Accu-Tabs SI
Acid Rite Tablets
Citric Acid 50% FG
Db6 60% Solution
Granular Chlorine

Sediment Filters

Rusco Spin-Down & Rusco Sediment Trapper

Rusco Spin-Down and Rusco Sediment Trapper filters are efficient, easy to maintain sediment filters that can be used in applications from 1 GPM up to 100 GPM.



Rusco Spin-Down

Sediment Filters are highly flexible filters designed to be utilized in a wide variety of applications. Rusco's Spin-Down has been providing the industry leading sediment filtration solution since 1977.

- Landscaping
- Drinking water
- Livestock
- Agriculture
- Reclaimed Water

Rusco Spin-Down Filters come in sizes: 1/2", 3/4", 1", 1 1/4", 1 1/2" and 2".

Rusco Sediment Trapper Filters

Rusco Sediment Trapper filters provide the same advantages as the Spin-Down models, also with extra internal volume to handle exceptionally high amount of sediment.

Rusco Sediment Filters come in sizes: 1/2", 3/4", 1", 1 1/4", 1 1/2" and 2".



Helix HD Series Filters

Filters

UNIQUE FEATURES

- Centrifugal cleaning action minimizes maintenance
- Large disc surface area, with three-dimensional depth
- Particles can be flushed while filter is in operation
- Several color-coded disc options available
- Durable, corrosion-resistant, injection-molded housing
- Easily removable, quick clamp lid assembly
- Pressure gauge ports molded into housing



The Body

The body contains one inlet and two outlets, enabling the filter to be installed at either 90 or 180 degrees. A threaded cap is supplied with the filter to terminate the outlet port not being used. Inlet/outlet connections are available in NPT or Victaulic. The body contains inlet and outlet pressure gauge ports (gauges not included) for monitoring the pressure differential across the filter element which determines when the disc cartridge needs to be removed for maintenance.

The Lid

The lid is injection-molded, using an incredibly strong polyamide material. The centrifugal action, created by the Helix-Element, spirals heavier particles flushing them either manually or automatically, from the 3/4" flush port at the lowest point in the lid.

The Closure

Manufactured in Type 316 Stainless steel, the quick-release clamp assembly is strong and reliable. No tools are necessary to remove the damp and filter cover when maintenance is required.

The Disc

The three-dimensional disc is ideal for filtering hard particles (such as sediment and scale) and soft fibrous material (such as algae, bugs, cottonwood seed, etc.). The color-coded discs are available in a variety of micron sizes.

| Model# | GPM | Inlet outlet | Max Pressure | Connection Size | Dimensions |
|--------|-----|--------------|--------------|-----------------|---------------------------|
| HD-25A | 100 | 2" / NPT | 125 PSI | 3/4" | 12 1/8"X28 3/4"X22 15/16" |
| HD-2NA | 100 | 2" / NPT | 125 PSI | 3/4" | 12 1/8"X24 1/8"X18" |
| HD-2SW | 100 | 2"/Grooved | 125 PSI | 3/4" | 12 1/8"X28 3/4"X22 15/16" |
| HD-2NW | 100 | 2"/Grooved | 125 PSI | 3/4" | 12 1/8"X24 1/8"X18" |
| HD-3NA | 200 | 3" / NPT | 125 PSI | 3/4" | 13 1/4"X30"X22 15/16" |
| HD-3NW | 200 | 3"/Grooved | 125 PSI | 3/4" | 13 1/4"X30"X22 15/16" |

Hayward Simplex Bag Filters



Hayward FIV Series Simplex Bag Filters

Made from injected molded polypropylene for superior corrosion resistance. Hand removable, ergonomic cover with liquid displacing dome. Rated up to 150 gpm. True union socket with drain port at bottom. Vertical flow flutes in basket with no bag snag and more flow area. Sizes 1 1/4", 1 1/2", 2", 2 1/2", 3" and 4".

316 Stainless Steel Basket

For use in FLV Series Filter Bags. The basket itself provides the structure strength required when processing highly viscous materials or when experiencing high solid loading.



Needled Felt and Moodfilament Mesh Filter Bags. Made from silicon-free materials with handles. Easy change-out reduces down time. Compact for easy disposal. Micron ratings - 1, 5, 10, 25, 50, 100, 150, 200, 400, 600, 800.

SES carries a full line of many hard to find and unique products such as:

- NEMA rated Enclosure Housing
- Electrical Control Panels, Switches, and Components
- Weld On PVC Glue & Primer
- Full Port Tank Drains
- Sch. 80 PVC Specialty Parts:
Bulkheads, caps, Tank Tite Springs
- Plastic Chemical & Water Storage Tanks
- All kinds of Check Valves
- Ask SES about Quantity discount.

**Give us a call for these hard to find items,
if we don't have them in stock, we will find
them!**



Accu-Tabs SI and Acid Rite Tablets!



Nancy@sesystemsinc.com

P.O. Box 705 Conyers GA 30012

Tel 770.922.5828

Fax 770.922.5587

WWW.SESFOODSAFETY.COM